

**Light,
compact,
reliable
and
always profitable!**



tirak™

Traction hoists with limitless pulling length for
man riding and material handling
Capacity from 300 to 3000 kg

tirak™

Whether as a replacement for a crane ...



... or as a work-horse, ...

... for a suspended platform, ...



... or as a drive for hoisting a variety of types of working platform...

... and many more applications besides,...



... with the **tirak™** we guarantee that you always have a solution to your problem which is both practical and economical!

The tirak™ is a traction hoist – it drives the rope without reeling it in. For you, this means:

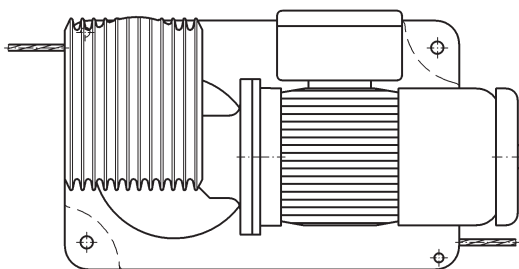
You can lift and pull as far or as high as you want.

Thanks to the tirak™ rope pass-through design, unlimited rope lengths are theoretically possible, making the tirak™ a flexible option for every application.

With the tirak™ you can „climb upwards“ with one rope for as far as you have to. This is why it is frequently used as a **drive for man riding**, as a single-person work seat and also for suspended platforms on famous high-rise buildings throughout the world.

The T-series

The T series is the first model in the tirak™ range and works with two traction sheaves. The wire rope runs through the two traction sheaves along an S-shaped path. The symmetrical design of the T-series makes these the only models capable of pulling in both directions with the same force. As such, they are ideal for use in all horizontal tasks where loads need to be moved back and forth.



The X-series

The X-series models use a single traction sheave to move the rope. The rope runs through a fittingly-sized groove in the traction sheave and is also pressed into place by means of a press system. This further increases the true load-bearing capacity to ensure even greater safety. At a particular point on the traction sheave the incoming and outgoing ropes cross over, lending the X series its name.

Using this functional principle, all of the models achieve a steady and constant rope speed; regardless of the position of the load.

Top quality

The tirak™ combines proven technology with modern developments and state-of-the-art production methods in order to achieve high standards of quality.

Development and production –
Made in Germany

Durable and powerful, yet nevertheless easy to transport, the tirak™ hoist provides the highest levels of reliability and dependability even in demanding environments, such as the harsh conditions on construction sites. This is why the tirak™ has now become the No. 1 motorized traction hoist worldwide.

Efficiency

Two decisive reasons for this success are the following profitability arguments:

1. Through the single rope drive, almost no maintenance costs are incurred beyond the mandatory safety inspections.
2. The extremely gentle rope drive ensures that the rope has a long service life.

Safety

Numerous details ensure the greatest possible safety when using the tirak™. All of the relevant standards and safety regulations are taken into account during development.

All tirak™ systems intended for man riding are equipped with integrated overload protection which reliably shuts down the tirak™ in the event of overloading.

The highest safety standards apply when man riding. Certified to EN1808 by an independent testing authority, the tirak™ hoist fulfils all of these requirements.

tirak™ for man riding



Work basket for assembly work



Work seat during repair work.

Universal use

The tirak™ hoist is the ideal and universal option for man riding.

The compact dimensions and low weight enable easy handling and simplify the integration of the tirak™ hoist into the company's own applications, thus increasing productivity and efficiency.

The low weight of the tirak™ permits the system to have a higher payload.

A complete series of tirak™ models offers load capacities from below 300 kg up to 2,000 kg for man riding.

This saves you a lot of time – and, of course, saves you money too!



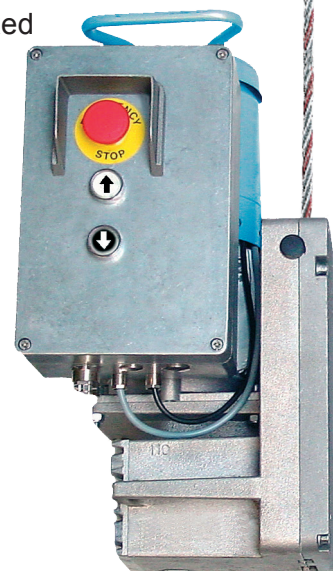
Application

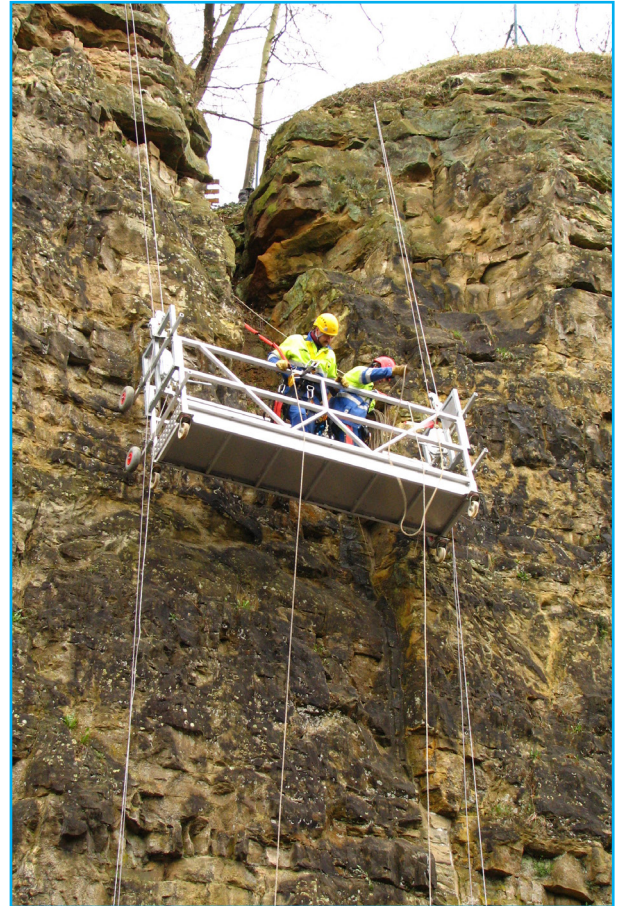
The tirak™ hoist can either be attached to a fixed mounting in order to pull the load on the wire rope or the rope is fixed and the tirak™ moves along the rope

with the load. A wide range of accessories is available for attaching the tirak™ or the load, to suit the requirements of your application.

If the tirak™ utilizes a fixed mounting then deflection rollers can be used to guide or reeve the rope.

So that the right tirak™ solution can be found for every task.





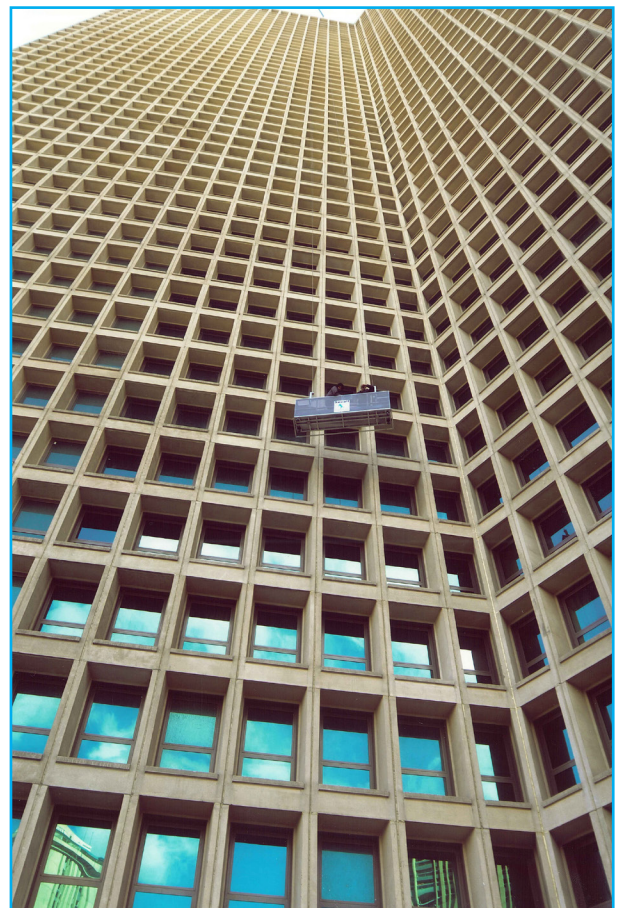
Suspended Access

Tractel® has more than 50 years of experience in the development of tailor-made solutions, both for temporary and permanent access.

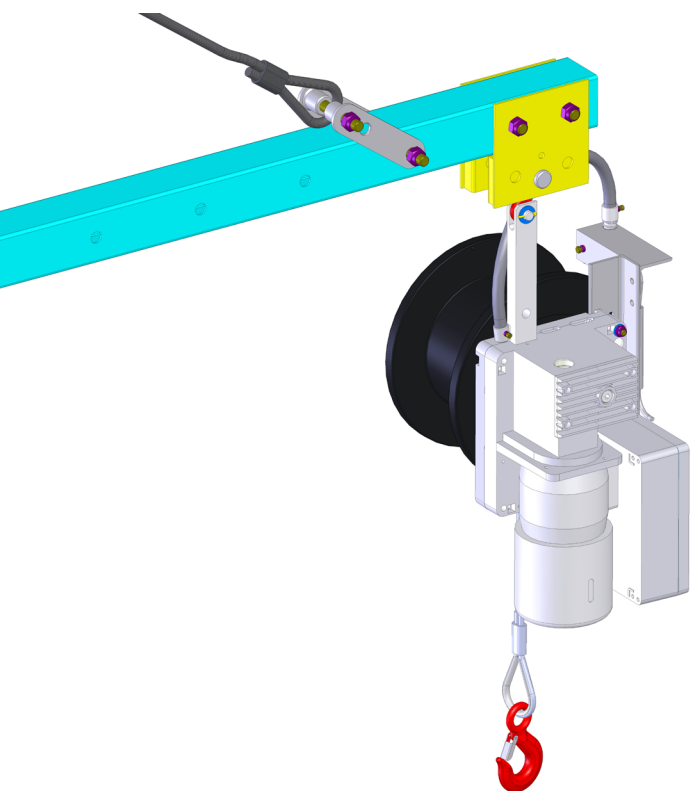
Based on the tirak™ our engineers are able to formulate innovative and technically demanding access solutions.

The Tractel® product range includes a large selection of suspended working platforms with which workers can be efficiently transported with their tools and material to the correct height and ergonomically positioned.

With the tirak™ at the heart of every system, you can rely on the tested safety and proven reliability of this special hoist during these applications too.



tirak™ for material handling



tirak™ over the load

Possibilities

Three forms of application offer plenty of scope for the use of the tirak™:

1. tirak™ over the load
2. tirak™ anchored „within easy reach“ – whereby this is a very broad term given the open length of the rope. Only a pulley needs to be fixed at the upper position. This simplifies preparation and saves lots of time.
3. There is an even quicker method if you wish to hoist through the opening in a load-bearing wall/ceiling: Simply place the tirak™ behind or on top of it.

However, here the use of a mobile hoist is recommended with the tirak™.

Versatility

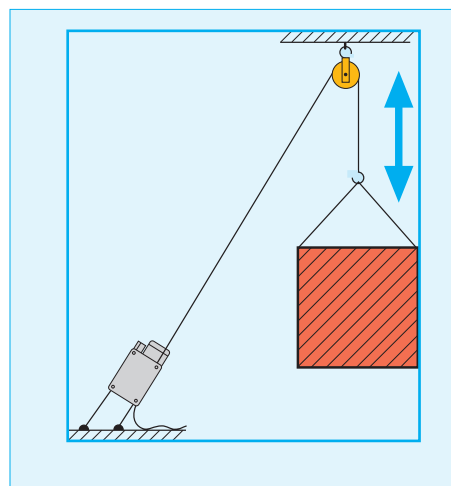
Of course, the tirak™ is not only restricted to man riding.

Its special advantages are

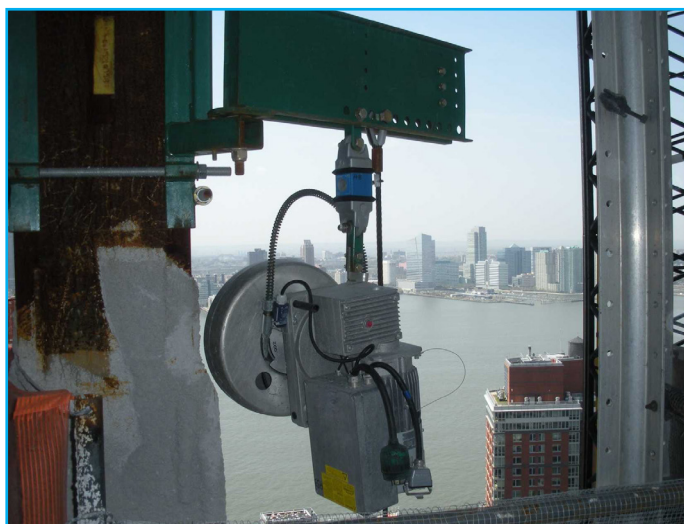
- long weight,
- compact shape,
- unlimited rope length

enable easy handling and simplify the integration of the tirak™ hoist into the company's own applications, thus increasing productivity and efficiency.

A complete series of tirak™ models offers load capacities from below 300 kg up to 3000 kg for material handling.



Hoisting via a pulley (schematic diagram)



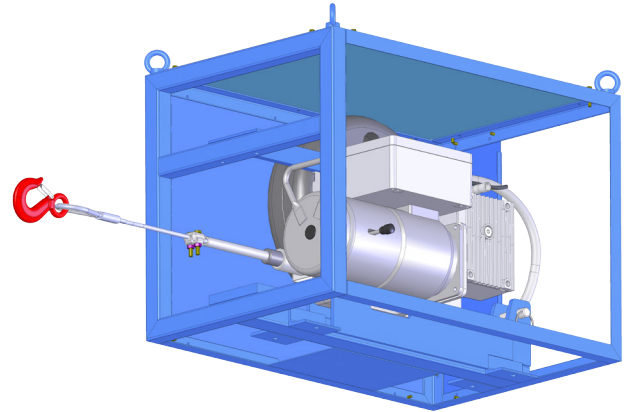
Mobile hoists

tirak™

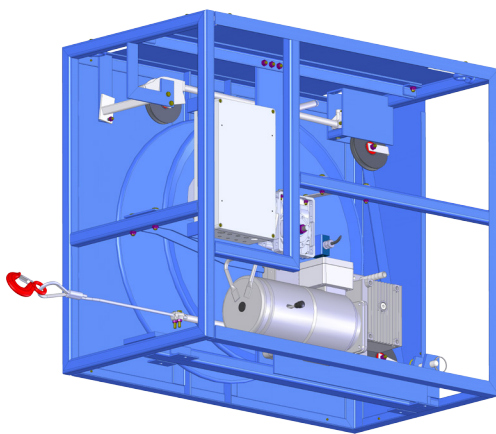
They are the logical supplement to the tirak™ series.

tirak™ hoists can be equipped with a mobile frame in order to provide them with better protection against day-to-day damage or for easier transport.

This simplifies the handling of larger hoists or models fitted with a wire rope reeler, in particular, and reliably protects the tirak™ against hard impacts. A separate wire rope reeler can also be integrated into the frame if especially long ropes need to be wound up or stored.



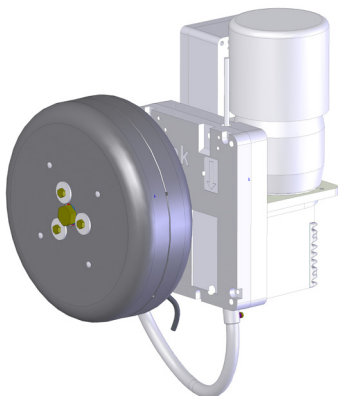
- The simplest solution consists of mounting a free reeler on the tirak™ into which the wire rope is fed. The rigidity of the wire rope causes it to wind and unwind automatically.
- When used with longer rope lengths, the rope reeler is driven by an extended traction sheave shaft. Ropes of up to several hundred metres in length can be stored economically on the tirak™. This also enables simple transportation.
- A separately driven rope reeler in a frame is utilized for even longer rope lengths. On mobile tirak™ systems this reeler is integrated into the frame, creating a single unit.



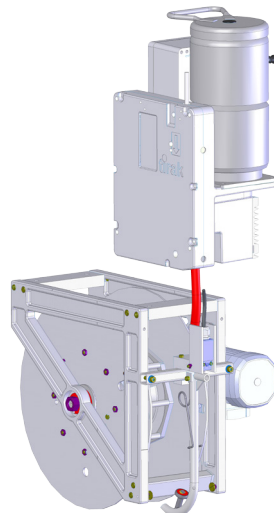
Wire rope reeler

Thanks to the rope pass-through design of the tirak™ a wire rope reeler is not absolutely essential. The free end of the rope can simply be left hanging.

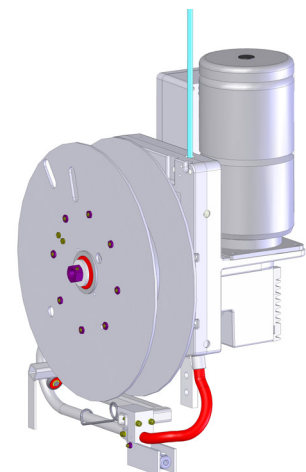
If you would prefer not to, three different types of rope reelers are available:



Free running reeler

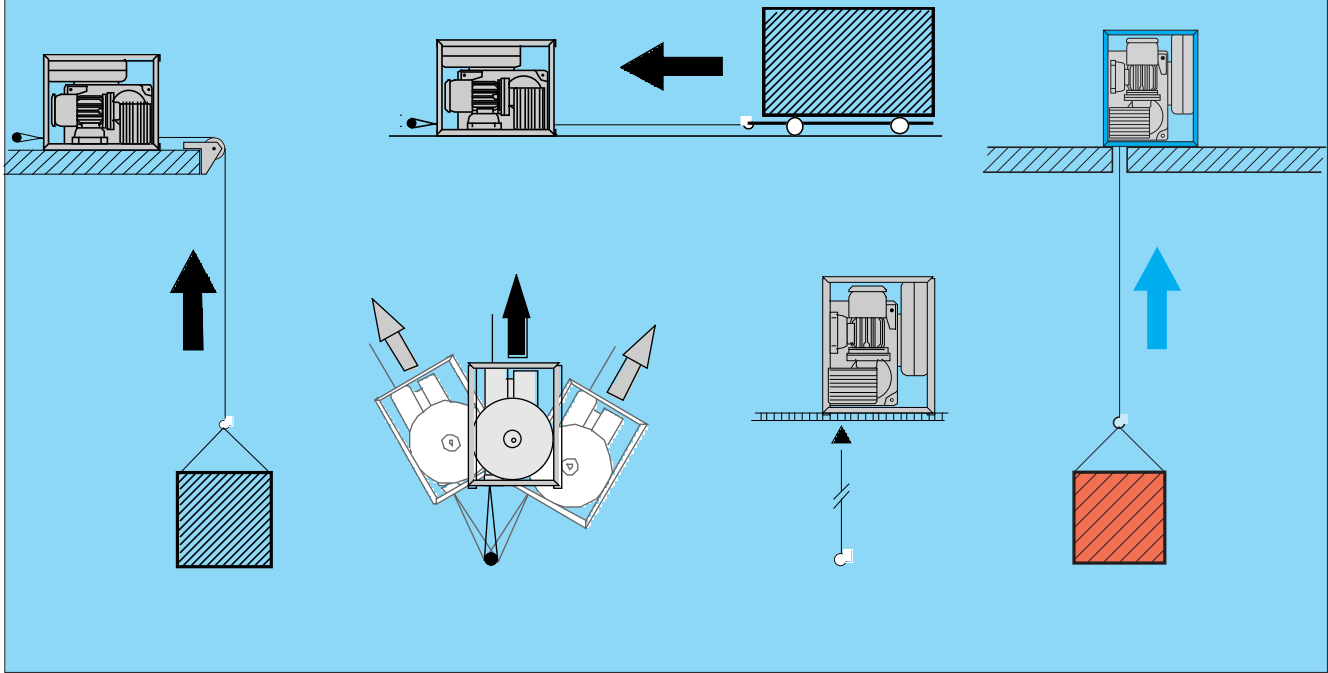


Separately driven wire rope reeler



Driven wire rope reeler
www.tractel.com

Its use is as quick and simple as it is versatile:

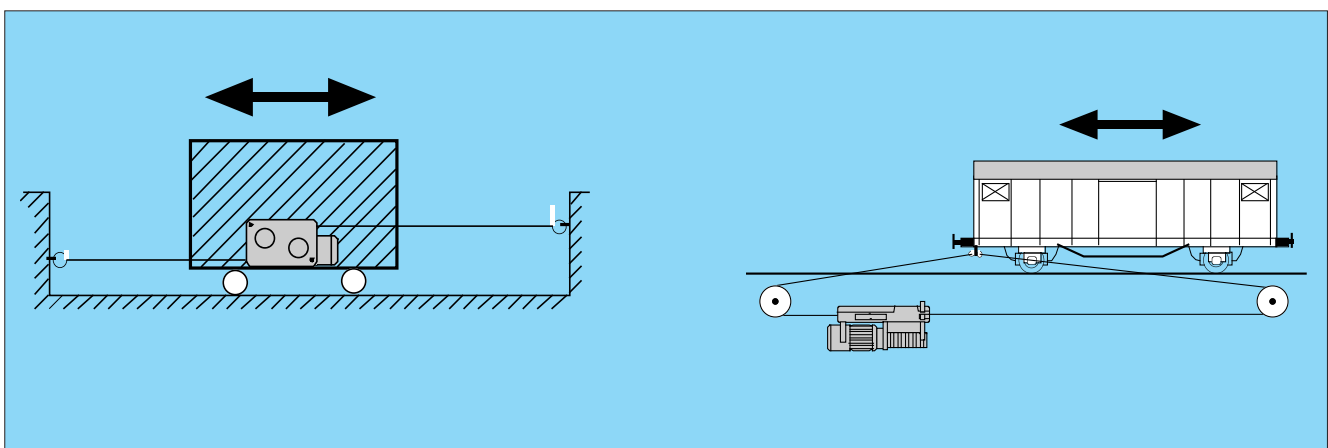


tirak™ T-series

The T series can hoist in both directions thanks to the symmetrical structure of its two traction sheaves.

Hoisting ≠ Lifting

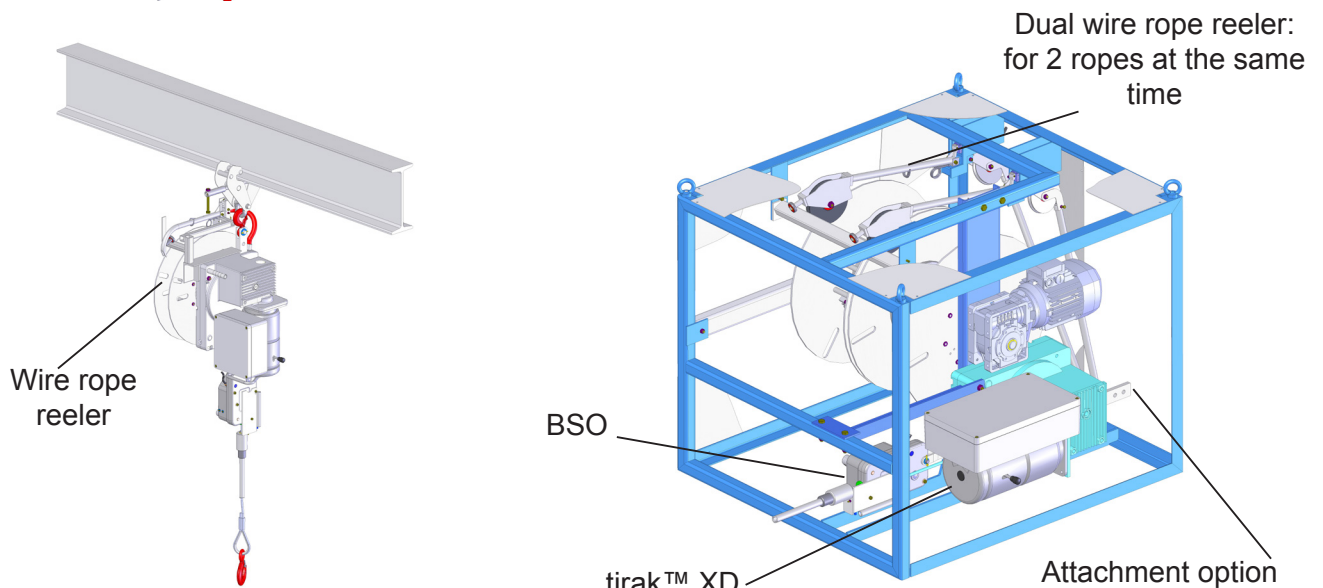
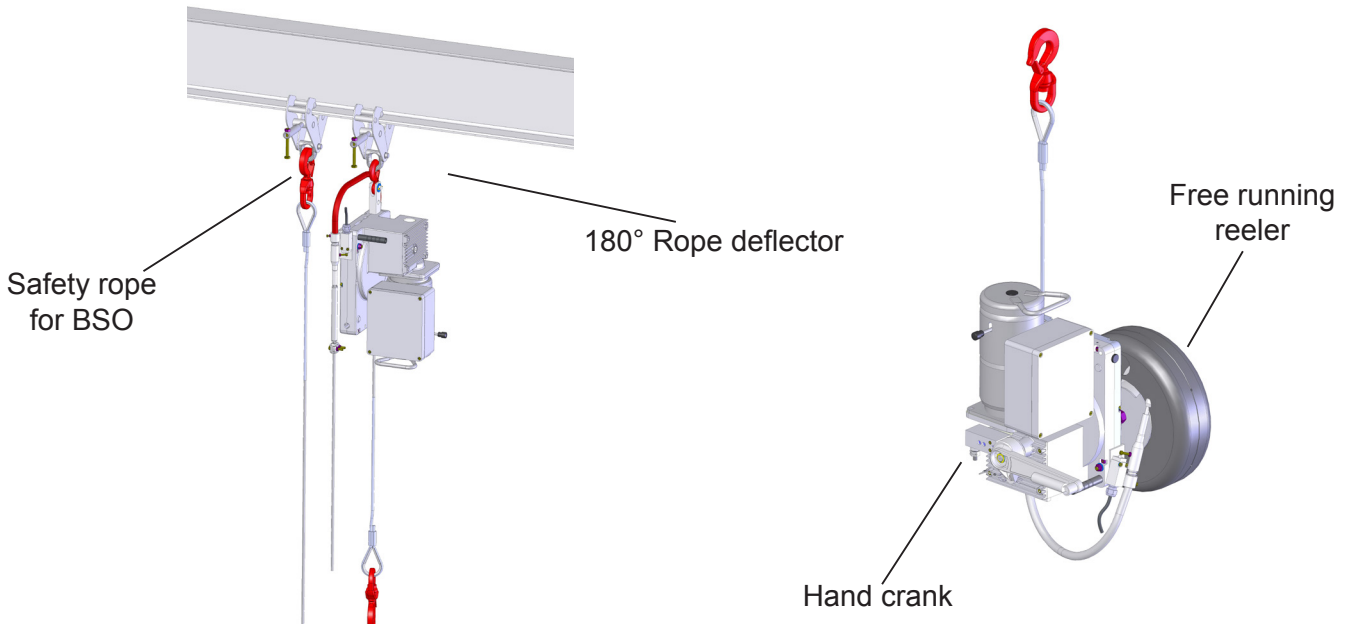
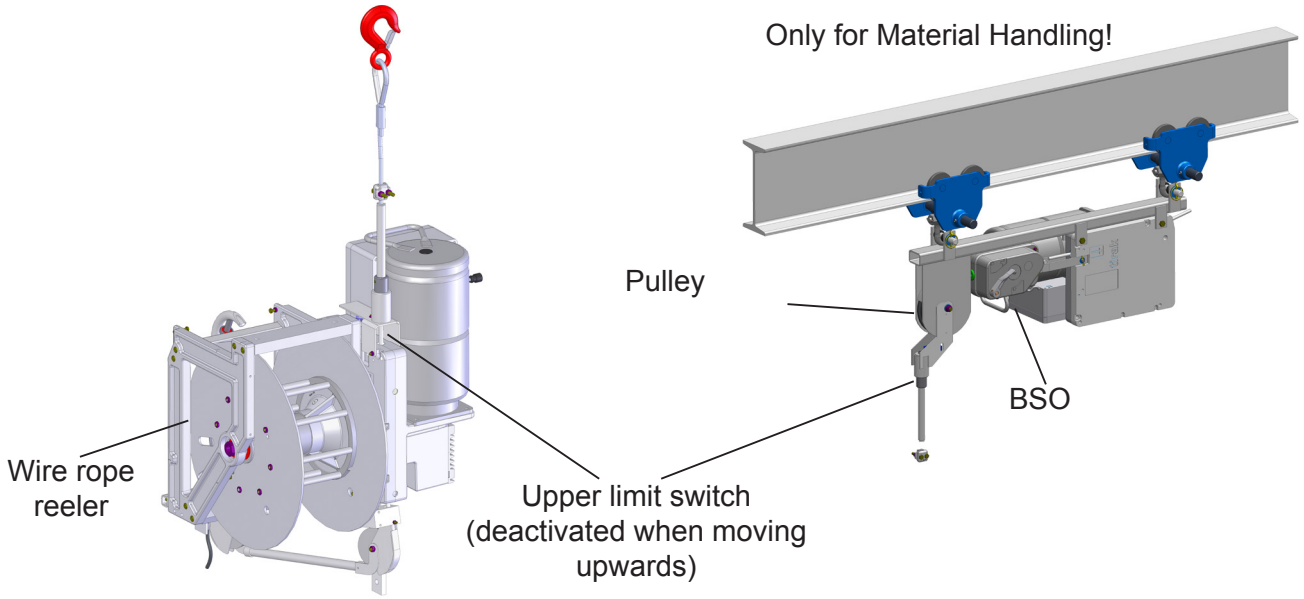
Depending on the friction factors, many times the hoisting capacity can be hoisted using the tirak™.



Various fittings

tirak™

Only for Material Handling!



Illustrations without on-site cladding.

www.tractel.com

tirak™ Technical specifications

Working speeds (m/min)

	Drive types*	for X 2000 / 3000			
		50 Hz	60 Hz	50 Hz	60 Hz
0 =	3 Ph	9	11	6	7
or pneumatic drive or hydraulic drive					
2 =	3 Ph	18	22	12	14
3 =	3 Ph	9/18	11/22	6/12	7/14
4 =	3 Ph	4,5	5,5	4,5	5,5
5 =	3 Ph	4,5/9	5,5/11	3/6	3,5/7
6 =	3 Ph	4,5/18	5,5/22	3/12	3,5/14
7 =	3 Ph	stepless (0 to 9 / 18 / 30)			
1 =	1 Ph	9	11	-	-

* Drive types:

3 Ph = Three-phase motor
1 Ph = AC motor (single phase)

Optional wire rope reeler for material handling & man-riding*

Overview			Free running wire rope reeler (Rope length) 1)(on request) not recommended for every applications				Single reeler GM = triggered by a separate gearmotor op. GM = optional triggering with gearmotor Other tirak™ are directly triggered by the tirak™ shaft (XXX m) = maximum usable length			
tirak™	Ø Rope	Capacity (kg)	Ø350 mm	Ø400 mm	Ø450 mm (1)	Ø600 mm	90m (Plastic)	120m (op. GM)	220m (op. GM)	320m (op. GM)
X 300	Ø 8mm	300	40m	60m	-	-	90m (75m)	-	-	-
X 400	Ø 8mm	400	40m	60m	-	-	90m (75m)	-	-	-
X 310	Ø 6mm	300	60m	80m	-	-	160m (140m)	-	-	-
X 510	Ø 6mm	350	60m	80m	-	-	160m (140m)	200m (189m)	360m (341m)	520m (493m)
X 500	Ø 8mm	500	40m	60m	80m	-	90m (75m)	120m (110m)	220m (205m)	320m (300m)
L 500	Ø 8mm	500	40m	60m	-	-	-	-	-	-
X 600	Ø 8mm	600	40m	60m	80m	-	90m (75m)	120m (110m)	220m (205m)	320m (300m)
X 800	Ø 8mm	800	40m	60m	80m	-	90m (75m)	120m (110m)	220m (205m)	320m (300m)
X 520	Ø 9mm	500	33m	50m	65m	-	70m (55m)	95m (85m)	170m (155m)	250m (230m)
X 620	Ø 9mm	600	33m	50m	65m	-	70m (55m)	95m (85m)	170m (155m)	250m (230m)
X 820	Ø 9mm	800	33m	50m	65m	-	70m (55m)	95m (85m)	170m (155m)	250m (230m)
X 1020	Ø 9mm	980	33m	50m	65m	-	70m (55m)	95m (85m)	170m (155m)	250m (230m)
X 1220	Ø 9mm	1250	33m	50m	65m	-	70m (55m)	95m (85m)	170m (155m)	250m (230m)
X 1030	Ø 10mm	1000	27m	40m	55m	-	-	80m (70m)	150m (135m)	220m (200m)
X 1530	Ø 10mm	1500	27m	40m	55m	-	-	80m (70m)	150m (135m)	220m (200m)
X 2050	Ø 14mm	2000	-	-	40m	110m	-	55m (GM)	65m (GM)	-
X 3050	Ø 14mm	3000	-	-	40m	110m	-	55m (GM)	65m (GM)	-
X 300P	Ø 8mm	300	40m	60m	-	-	90m (75m)	-	-	-
X 400P	Ø 8mm	400	40m	60m	-	-	90m (75m)	-	-	-
X 500P	Ø 8mm	500	40m	60m	80m	-	90m (75m)	120m (110m)	220m (205m)	320m (300m)
X 520P	Ø 9mm	500	33m	50m	65m	-	70m (55m)	95m (85m)	170m (155m)	250m (230m)
X 620P	Ø 9mm	600	33m	50m	65m	-	70m (55m)	95m (85m)	170m (155m)	250m (230m)
X 820P	Ø 9mm	800	33m	50m	65m	-	70m (55m)	95m (85m)	170m (155m)	250m (230m)
X 1030P	Ø 10mm	1000	27m	40m	55m	-	-	80m (70m)	150m (135m)	220m (200m)
X 2050P	Ø 14mm	2000	-	-	40m	110m	-	55m (GM)	65m (GM)	-

*Reeler only available for listed tirak™

Optional wire rope reeler for mobile winches*

Overview			Free running wire rope reeler (Rope length)	Single reeler MW = Mobile Winch- in frame GM = triggered by a separate gearmotor Other tirak™ are directly triggered by the tirak™ shaft (XXX m) = maximum usable length					
tirak™	Ø Rope	Capacity (kg)	MW	MW 120m	MW 220m	MW 300m GM	MW 500m	MW 800m GM	MW 1000m GM
X 510	Ø 6mm	350	80m	200m (189m)	360m (341m)	-	820m (793m)	-	-
X 500	Ø 8mm	500	60m	120m (110m)	220m (205m)	-	500m (480m)	-	1000m (978m)
X 600	Ø 8mm	600	60m	120m (110m)	220m (205m)	-	500m (480m)	-	1000m (978m)
X 800	Ø 8mm	800	60m	120m (110m)	220m (205m)	-	500m (480m)	-	1000m (978m)
X 520	Ø 9mm	500	50m	95m (85m)	170m (155m)	-	400m (380m)	-	800m (780m)
X 620	Ø 9mm	600	50m	95m (85m)	170m (155m)	-	400m (380m)	-	800m (780m)
X 820	Ø 9mm	800	50m	95m (85m)	170m (155m)	-	400m (380m)	-	800m (780m)
X 1020	Ø 9mm	980	50m	95m (85m)	170m (155m)	-	400m (380m)	-	800m (780m)
X 1220	Ø 9mm	1250	50m	95m (85m)	170m (155m)	-	400m (380m)	-	800m (780m)
X 1030	Ø 10mm	1000	40m	80m (70m)	150m (135m)	-	350m (333m)	-	700m (686m)
X 1530	Ø 10mm	1500	40m	80m (70m)	150m (135m)	-	350m (333m)	-	700m (686m)
X 2050	Ø 14mm	2000	40m / 110m	-	-	300m (287m)	-	800m (765m)	-
X 3050	Ø 14mm	3000	40m / 110m	-	-	300m (287m)	-	800m (765m)	-
X 500P	Ø 8mm	500	60m	120m (110m)	220m (205m)	-	500m (480m)	-	1000m (978m)
X 520P	Ø 9mm	500	50m	95m (85m)	170m (155m)	-	400m (380m)	-	800m (780m)
X 620P	Ø 9mm	600	50m	95m (85m)	170m (155m)	-	400m (380m)	-	800m (780m)
X 820P	Ø 9mm	800	50m	95m (85m)	170m (155m)	-	400m (380m)	-	800m (780m)
X 1030P	Ø 10mm	1000	40m	95m (85m)	170m (155m)	-	350m (333m)	-	700m (686m)
X 2050P	Ø 14mm	2000	40m / 110m	-	-	300m (287m)	-	800m (765m)	-

Double reeler MW = Mobile Winch- in frame (XXX m) = maximum usable length					
			MW 2x120m	MW 2x220m	MW 2x320m
XD 300P	Ø 8mm	350	2x120m (2x110m)	2x220m (2x205m)	-
XD 310P	Ø 6mm	350	2x200m (2x189m)	2x360m (2x341m)	-
XD 500P	Ø 8mm	500	2x120m (2x110m)	2x220m (2x205m)	2x320m (2x300m)
XD 800P	Ø 8mm	800	2x120m (2x110m)	2x220m (2x205m)	2x320m (2x300m)
XD 720P	Ø 9mm	700	2x95m (2x85m)	2x170m (2x155m)	2x250m (2x230m)
XD 820P	Ø 9mm	800	2x95m (2x85m)	2x170m (2x155m)	2x250m (2x230m)
XD 1020P	Ø 9mm	1000	2x95m (2x85m)	2x170m (2x155m)	2x250m (2x230m)
XD 1030P	Ø 10mm	1000	2x80m (2x70m)	2x150m (2x135m)	2x220m (2x200m)

*Reeler only available for listed tirak™

tirak™ Fall arrest device Blocstop™

An additional safety system in accordance with DIN EN 1808 is mandatory in man riding applications. The system is used to secure the work basket or the platform on which personnel are working against falling.

Fall protection

That is precisely what our Blocstop™ BSO does. It is small, light and compact and attached to the working platform where the safety rope runs through it.

If the movement of the safety rope exceeds a specified speed then the BSO triggers automatically and securely catches the load. The safety rope is held between the clamping jaws, preventing the rope from slipping any further. However, the surface of the clamping jaws is large enough to prevent damage to the rope. The Blocstop™ is designed in such a way that the clamping jaws grip tighter, the higher the load on the rope.

Furthermore, the Blocstop™ has been tested using many times the nominal load in order to ensure an extremely large safety margin.



Electrical deactivation

All of the BSO models can be equipped with an electric switch which immediately switches off the tirak™ if triggered, for example. This option increases safety in the event of an emergency stop as it prevents rope slack above the platform.

Additional models

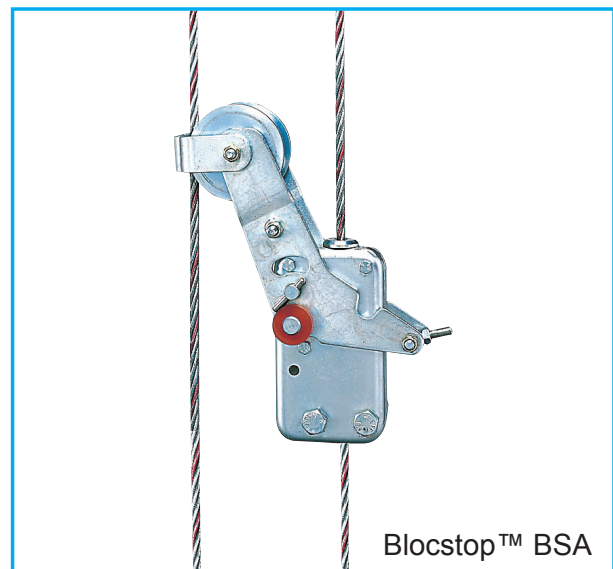
The Blocstop™ family includes two additional models: the BSA and the BS.

In contrast to the BSO, the BSA's clamping jaws are not triggered by excessive speed but rather by monitoring the suspension rope. The BSA is held open by a lever which is supported on the suspension rope by a roller. If the suspension rope breaks then this support stops and the BSA closes.

In precisely the same way as the BSO, the clamping jaws clamp the safety rope and prevent the load or the platform from falling.

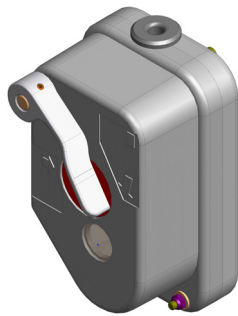
On platforms with two suspension points, arranging the suspension and safety ropes in parallel enables the system to monitor the tilt of the platform. If one side of the platform descends then the BSA closes on the lower side, catching the platform before the tilt reaches a critical angle.

The BS functions in a manner similar to the BSA with the exception of the fact that the lever is activated either manually or mechanically.



Blocstop™ BSA

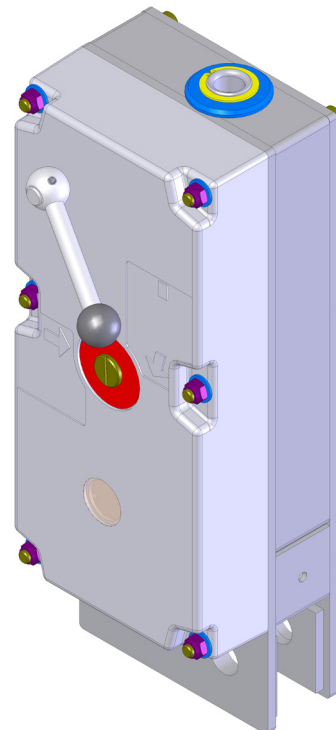
Model	WLL in t		Rope specification		Bolt Ø in mm
	Man riding	Material handling	Ø in mm	Min. breaking load in kN	
BSO 510	–	0,35	6	13,7	12
BSO 500	0,6	0,6	8	47,1	
BSO 520	0,6	0,6	9	47,1	
BSO 1000	0,7	0,7	8	54,9	
BSO 1020	0,8	0,8	9	62,8	
BSO 1030	1,0	1,0	10	78,5	
BSO 1040	1,0	1,0	11,5	78,5	
BSO 2050	2,0	2,6	14	157,0	22
BSO 2360	2,3	3,0	16	180,5	



BSO 500 - 510 - 520



BSO 1000 - 1020 - 1030



BSO 2050 - 3060

tirak™ Anchoring points Corso

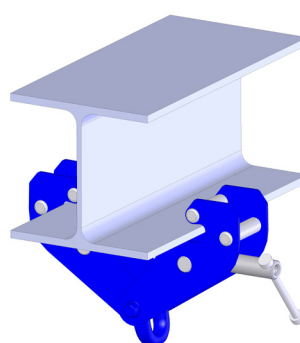
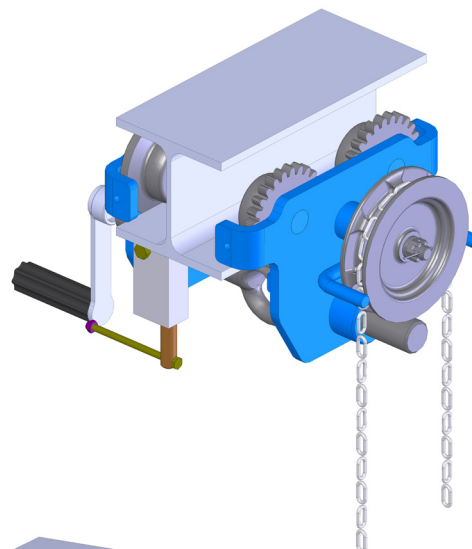
Mounting clamps, push and geared trolleys are frequently used for material transport.

However, there are an increasing number of cases where these products are also to be used for man riding.

This is now easily possible, because the Corso mounting clamps and the Corso push and geared trolleys meet the demands of EN 1808 for man riding.

The systems were subjected to intensive testing in order to demonstrate that all of the high standards for man riding are fulfilled without exception.

The push and geared trolleys are equipped with an easily engaged and disengaged brake system for greater safety. This system serves to prevent unintentional movement and provides greater safety when working in the basket or on the platform.



Model	WLL in t	Flange width in mm	Total width in mm	Total height in mm	Rollers Ø in mm	Smallest cam radius in mm
Mounting clamps for man riding						
LT-1B	1	75 - 235	180 - 380	155 - 190	–	–
LT-2B	2	75 - 235	180 - 380	155 - 190	–	–
LT-3B	2,5	95 - 335	230 - 500	215 - 275	–	–
LT-5B	3	95 - 335	230 - 500	215 - 275	–	–
LT-10B	7	95 - 345	255 - 515	250 - 315	–	–
Push trolleys for man riding						
Corso 0,5	0,5	62 - 220	324	182	62	0,9
		220 - 300	424			
Corso 1,0	1,0	58 - 220	334	210	62	1,0
		220 - 300	434			
Corso 2,0	2,0	68 - 220	324	242	82	1,2
		220 - 300	438			
Corso 3,0	3,0	74 - 220	347	310	100	1,3
		220 - 300	446			
Geared trolleys for man riding						
Corso 1,0	1,0	58 - 220	334	210	62	1,0
		220 - 300	434			
Corso 2,0	2,0	68 - 220	342	242	82	1,2
		220 - 300	438			
Corso 3,0	3,0	74 - 220	347	310	100	1,3
		220 - 300	446			

Type designation of tirak™

tirak™

L 500 P
X SD 502 P
X 1532

tirak™-Typ
 L = 1 driver disc (lightweight)
 X = 1 driver disc
 T = 2 driver discs

Execution
 P = Man riding
 A = Air operated
 D = Dual wire rope Tirak

Capacity [kg]	
2 =	200
3 =	300
4 =	400
5 =	500
7 =	700
8 =	800
10 =	1000
15 =	1500
20 =	2000
30 =	3000

Wire rope Ø [mm]	
0 =	8
1 =	6
2 =	9
3 =	10
4 =	11
5 =	14
6 =	16

Kind of motor *	Working speed [m/min]		
	50 Hz	60 Hz	for X 2000 / 3000 50 Hz
0 =	9	11	6
or Air motor or Hydraulic motor			
2 =	18	22	12
3 =	9/18	11/22	6/12
4 =	4,5	5,5	4,5
5 =	4,5/9	5,5/11	3/6
6 =	4,5/18	5,5/22	3/12
7 =	variable speed (0 bis 9 / 18 / 30)		
1 =	9	11	—
9 =	12		

Kind of motor * :

3 Ph	=	3 phase motor
1 Ph	=	single phase motor
G	=	DC motor

GLOBAL REACH



NORTH AMERICA

CANADA

Tractel Ltd.
1615 Warden Avenue
Toronto, Ontario M1R 2T3, Canada
Phone: +1 800 465 4738
Fax: +1 416 298 0168
Email: marketing.swingstage@tractel.com

11020 Mirabeau Street
Montréal, QC H1J 2S3, Canada
Phone: +1 800 561 3229
Fax: +1 514 493 3342
Email: tractel.canada@tractel.com

MÉXICO

Tractel México S.A. de C.V.
Galileo #20, O cina 504.
Colonia Polanco
México, D.F. CP. 11560
Phone: +52 55 6721 8719
Fax: +52 55 6721 8718
Email: tractel.mexico@tractel.com

USA

Tractel Inc.
51 Morgan Drive
Norwood, MA 02062, USA
Phone: +1 800 421 0246
Fax: +1 781 826 3642
Email: tractel.usa-east@tractel.com

168 Mason Way
Unit B2
City of Industry, CA 91746, USA
Phone: +1 800 675 6727
Fax: +1 626 937 6730
Email: tractel.usa-west@tractel.com

BlueWater L.L.C

4064 Peavey Road
Chaska, MN 55318, USA
Phone: +1 866 579 3965
Email: info@bluewater-mfg.com

Fabenco, Inc

2002 Karbach St.
Houston, Texas 77092, USA
Phone: +1 713 686 6620
Fax: +1 713 688 8031
Email: info@safetygate.com

EUROPE

GERMANY

Tractel Greifzug GmbH
Scheidt bachstrasse 19-21
51469 Bergisch Gladbach, Germany
Phone: +49 22 02 10 04-0
Fax: +49 22 02 10 04 70
Email: info.greifzug@tractel.com

LUXEMBOURG

Tractel Secalt S.A.
Rue de l'Industrie 12
B.P 1113 - 3895 Foetz, Luxembourg
Phone: +352 43 42 42-1
Fax: +352 43 42 42-200
Email: secalt@tractel.com

SPAIN

Tractel Ibérica S.A.
Carretera del Medio, 265
08907 L'Hospitalet del Llobregat
Barcelona, Spain
Phone: +34 93 335 11 00
Fax: +34 93 336 39 16
Email: infotib@tractel.com

FRANCE

Tractel S.A.S.
RD 619 Saint-Hilaire-sous-Romilly
BP 38 Romilly-sur-Seine
10102, France
Phone: +33 3 25 21 07 00
Fax: +33 3 25 21 07 11
Email: info.tsas@tractel.com

IFMS S.A.S.

32, rue du Bois Galon
94120 Fontenay sous Bois, France
Phone: +33 1 56 29 22 22
E-mail: ifms.tractel@tractel.com

Tractel Solutions S.A.S.

77-79, rue Jules Guesde
69230 St Genis-Laval, France
Phone: +33 4 78 50 18 18
Fax: +33 4 72 66 25 41
Email: info.tractelsolutions@tractel.com

GREAT BRITAIN

Tractel UK Limited
Old Lane Halfway
Sheffield S20 3GA, United Kingdom
Phone: +44 114 248 22 66
Email: sales.uk@tractel.com

ITALY

Tractel Italiana SpA

Viale Europa 50
Cologno Monzese (Milano) 20093,
Italy
Phone: +39 02 254 47 86
Fax: +39 02 254 71 39
Email: infoit@tractel.com

NETHERLANDS

Tractel Benelux BV
Paardeweide 38
Breda 4824 EH, Netherlands
Phone: +31 76 54 35 135
Fax: +31 76 54 35 136
Email: sales.benelux@tractel.com

PORTUGAL

Lusotractel Lda
Bairro Alto Do Outeiro Armazém 1
Trajouce, 2785-653 S. Domingos
de Rana, Portugal
Phone: +351 214 459 800
Fax: +351 214 459809
Email: comercial.lusotractel@tractel.com

POLAND

Tractel Polska Sp. z o.o.
ul. Bysławska 82
Warszawa 04-993, Poland
Phone: +48 22 616 42 44
Fax: +48 22 616 42 47
Email: tractel.polska@tractel.com

NORDICS

Tractel Nordics
(Scanclimber OY)
Turkkirata 26
FI - 33960
Pirkalla, Finland
Phone: +358 10 680 7000
Fax: +358 10 680 7033
E-mail: tractel@scanclimber.com

RUSSIA

Tractel Russia O.O.O.
Olympiyskiy Prospect 38, Office 411
Mytishchi, Moscow Region
141006, Russia
Phone: +7 495 989 5135
Email: info.russia@tractel.com

ASIA

CHINA

Shanghai Tractel Mechanical Equip. Tech. Co. Ltd.
2nd oor, Block 1, 3500 Xiupu road,
Kangqiao, Pudong,
Shanghai, People's Republic of China
Phone: +86 21 6322 5570
Fax: +86 21 5353 0982

SINGAPORE

Tractel Singapore Pte Ltd
50 Woodlands Industrial Park E7
Singapore 757824
Phone: +65 6757 3113
Fax: +65 6757 3003
Email: enquiry@tractelsingapore.com

UAE

Tractel Secalt SA Dubai Branch
Office 1404, Prime Tower Business
Bay
PB 25768 Dubai, United Arab
Emirates
Phone: +971 4 343 0703
Email: tractel.me@tractel.com

INDIA

Secalt India Pvt Ltd.
412/A, 4th Floor, C-Wing, Kailash
Business Park, Veer Savarkar Road,
Parksite, Vikhroli West,
Mumbai 400079, India
Phone: +91 22 25175470/71/72
Email: info@secalt-india.com

TURKEY

Knot Yapı ve İş Güvenliği San.Tic. A.Ş.
Cevizli Mh. Tugay Yolu CD.
Nuvo Dragos Sitesi
A/120 Kat.11 Maltepe
34846 Istanbul, Turkey
Phone: +90 216 377 13 13
Fax: +90 216 377 54 44
Email: info@knot.com.tr

ANY OTHER COUNTRIES:

Tractel S.A.S.

RD 619 Saint-Hilaire-sous-Romilly
BP 38 Romilly-sur-Seine
10102, France
Phone: +33 3 25 21 07 00
Fax: +33 3 25 21 07 11
Email: info.tsas@tractel.com



www.tractel.com

